



# Early Learning Initiative

National College of Ireland

## An Insight into The Parent Child Home Programme

Michelle Moore - Coordinator

---

*Supporting parents, communities and schools  
in the education of children*

---





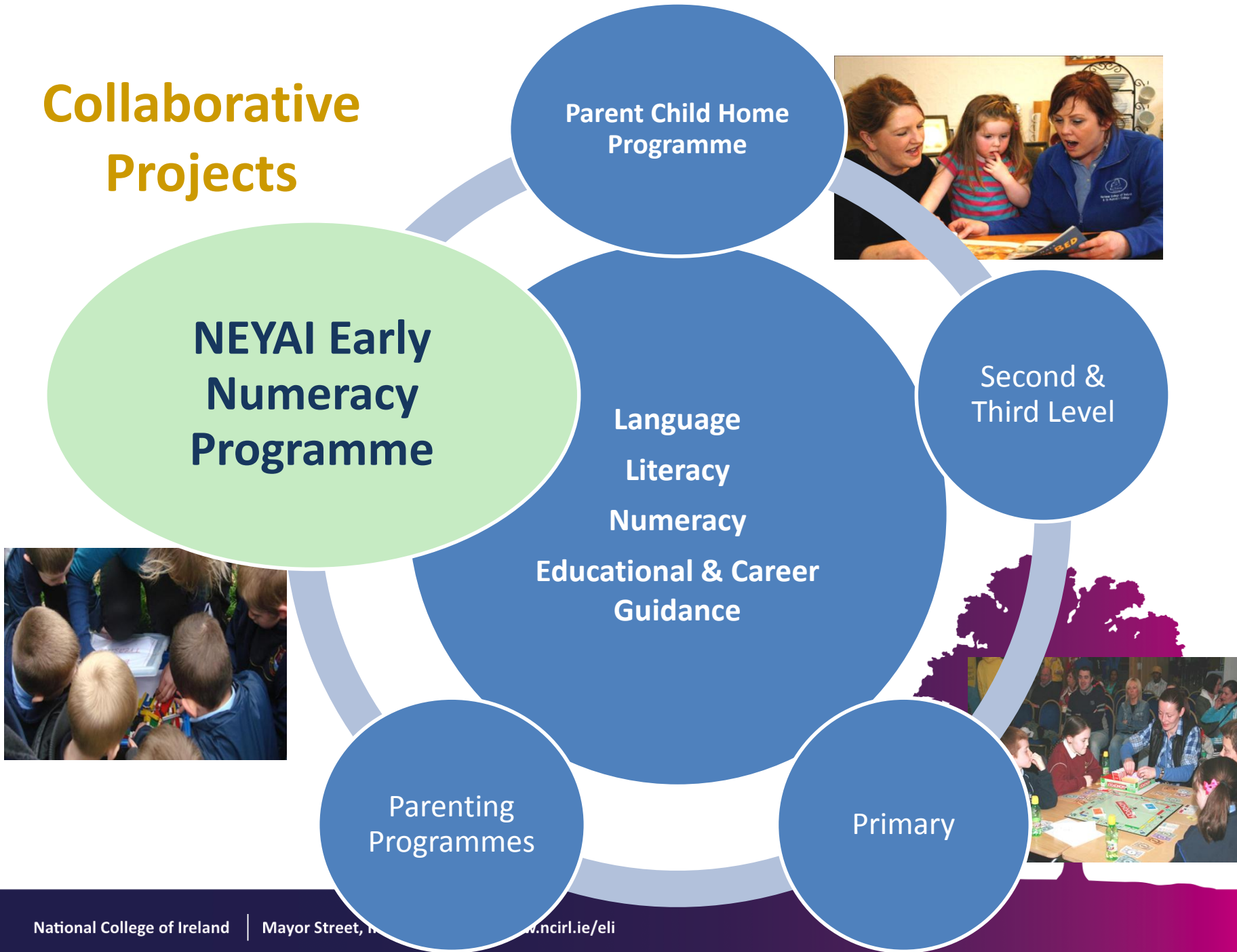
**Early Learning Initiative**

National College of Ireland

## Working in partnership with local communities to support educational journeys and achievements

- Address educational disadvantage and its impact on personal and career development
- Provide a range of innovative support programmes for children and their parents from early years to third level
- Uses community action research (Plan, Do, Review) to implement national policy and programmes

# Collaborative Projects



# History of The Parent Child Home Programme

- Researched Based Model Implemented in USA by Phyllis Levenstein in 1965
- Brought Over to Ireland in 2007
- Based in The National College of Ireland
- Serving Families in Dublin 1, 2, 3, 4
- Since 2007, **430 families** have Benefited from PCHP in The Docklands Area



# Our Home Visitors

- Trained
- Local
- Professional
- Confident



# Recruiting Families

Criteria (Order of Priority)	Rationale
Referrals from Public Health Nurses and/or other statutory agencies	<ul style="list-style-type: none"><li>✓ Child not meeting language and/or other developmental milestones</li><li>✓ Poor interaction between parent and child</li><li>✓ Child welfare concerns</li></ul>
Referral from family, friend and/or neighbour	<ul style="list-style-type: none"><li>✓ Child not speaking</li><li>✓ Family experiencing difficulties that are impacting adversely on the child</li></ul>
Parents with low/negative education experiences – early school leavers	<ul style="list-style-type: none"><li>✓ Research indicates that the lower the parents' education levels the less likely their children are to succeed in school</li><li>✓ Parents, who leave school early, are less likely to have the knowledge/skills needed to support their children</li></ul>
Child will attend the local school	<ul style="list-style-type: none"><li>✓ Family will continue to receive support through the Early Learning Initiative</li></ul>

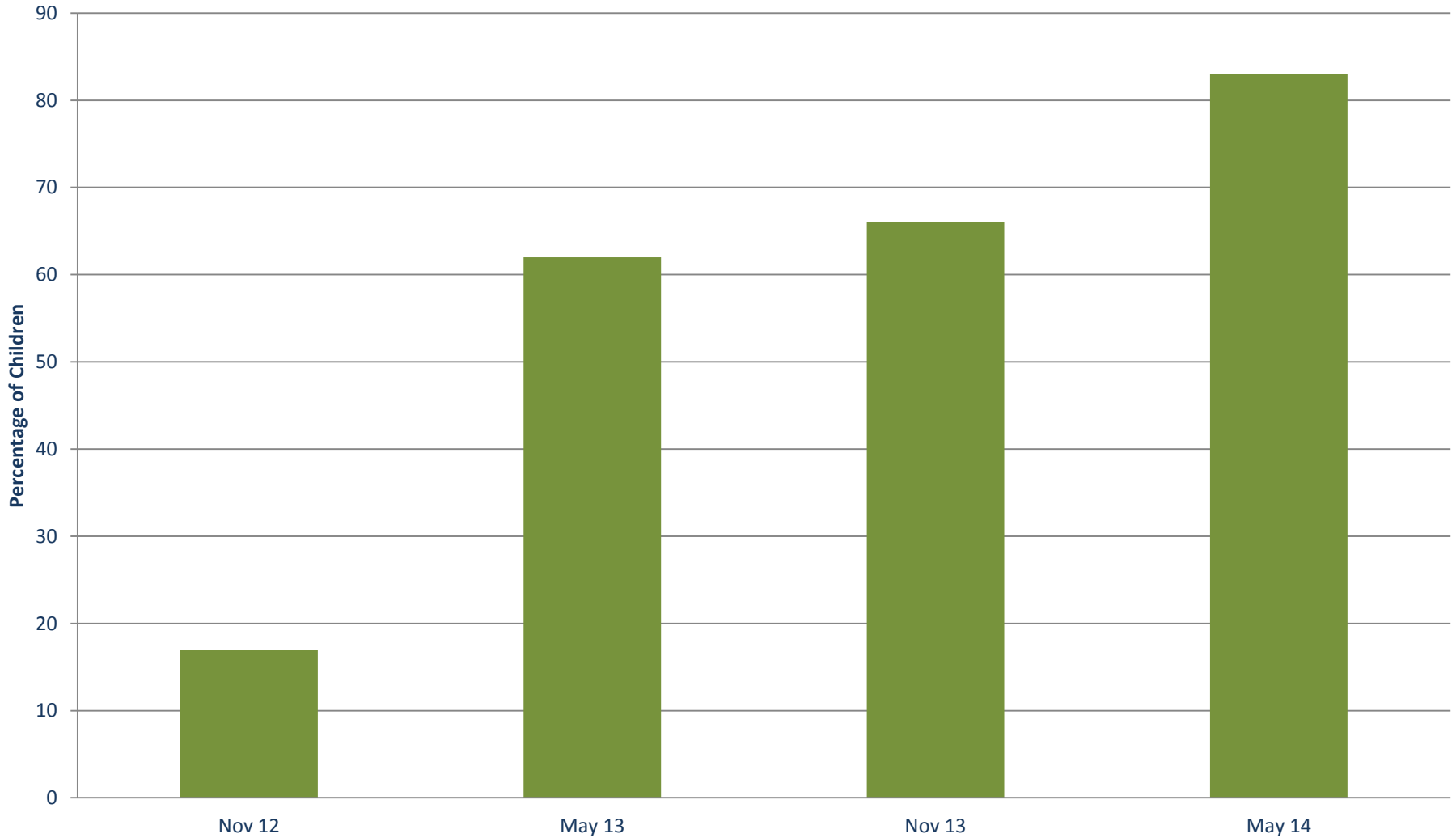
# PCHP in the Home

- 2 year Pre Numeracy and Literacy Programme
- 2 visits per Week
- Modelling to Parents/Guardians how to use the Books/Toys
- One to One Bonding Time
- Books and Toys are Gifted to the Families
- Builds Confidence in Parents and Children
- Tips and Ideas from Home Visitor
  - **open ended questions**
  - **positional Language**
  - **Labelling**



# PCHP Assessments: Year 2

Children developing normally i.e. scoring either a 3(often) or 4 (always)





# Impact

- ✓ At the 3 year developmental check, **Public Health Nurses** notice the gains made by children who have had PCHP and those who have not.
- ✓ **Speech therapists** see the improvement in the PCHP children on their waiting lists (2.5 yrs. wait) - the great majority of whom no longer need speech therapy.
- ✓ **Social workers** have asked for PCHP for their own children, having seen its impact on the children they are involved with.
- ✓ **Primary teachers** see PCHP children, often the **first of three generations**, enter primary school ready to succeed.
- ✓ Children are performing at levels expected of their age **unlike** children in similar disadvantaged areas.
- ✓ **Seven years on** families are continuing to use the skills they learnt through PCHP. They and their children continue to read for fun - using the books and toys with their PCHP and subsequent children.



# PCHP Assessment Cycle

## 1. Assessment

*Observations*  
*Conversations*  
*Tasks*  
*CBTs & PACTs*

## 2. Identifying Learning Needs

*Children & Parents*

## 3. Planning for Learning

*Language*  
*Approaches*  
*Activities*  
*Resources*

## 4. Modeling & Learning

*Talking*  
*Reading*  
*Playing*



# How we use the books and toys



# Parent Child Home Programme Changes Lives

*'He has learned lots such as colours, shapes, some numbers, foods etc. I've learned to use my imagination with books and Play-Doh, things like that, so we get fun out of them.'*

*'The books I found great and use them every day with my child as they are very educational and we both enjoy them. I would strongly recommend the programme to others.'*

*'I would like to say thank you for all the help and support on the programme and for all the great books and toys as they are so educational.'*

*'My reading has come on better and I am calm. I am a lot more relaxed and my child is the same with me. I love reading to him and we enjoy playing together. The Home Visitor is great in giving me tips and looks at all the different sides. I have said it to my family, friends and the intervention team.'*



**End-of-Year Quotes from PCHP Parents**

# Thank You

## Any Questions?

